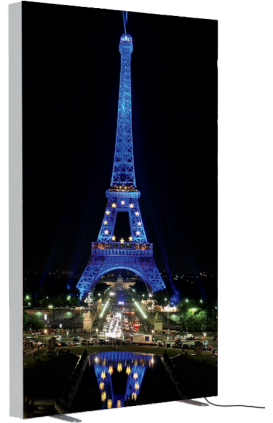
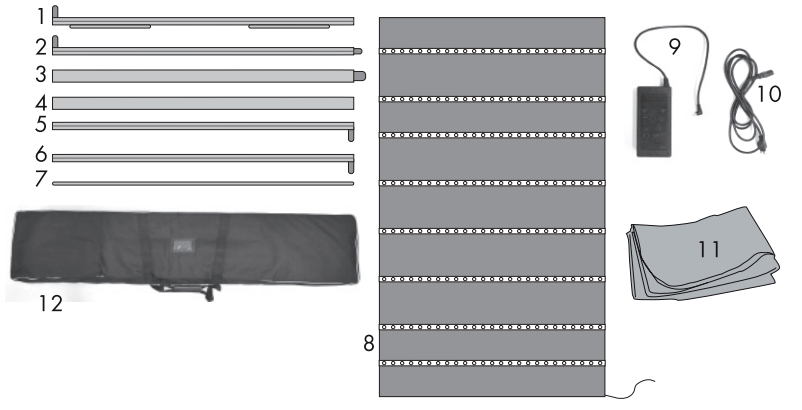


Standard SEG Glo

Product Parts

- 1 - Bottom
- 2 - Bottom Right
- 3 - Bottom Left
- 4 - Top Right
- 5 - Top
- 6 - Top Left
- 7 - Center Support Bar
- 8 - Back Panel with Lights
- 9 - Power Cord Adapter
- 10 - Power Cord
- 11 - Graphic
- 12 - Soft Case



Display Set-Up

Step 1

Set Bottom (1) on floor and rotate both feet 90 degrees. Assemble Bottom Right (2) and Bottom Left (3) to Bottom (1) by matching numbered stickers.

Step 2

Assemble Top Right (4) and Top Left (6) to the Left and Right Bottom sections by matching numbered stickers.

Step 3

Assemble Top (5) to the Left and Right Top sections by matching numbered stickers.

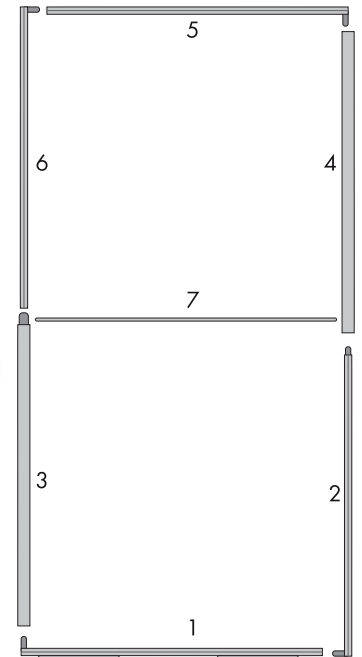
Step 4

Press Center Support Bar (7) into provided slots by pressing with equal pressure on both sides. Remove by pulling equally on both sides to prevent breaking.



Step 5

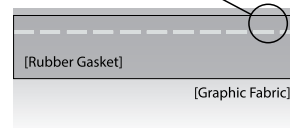
Graphic (11) installs on the beveled side of frame by inserting the graphic's gasket edges into the frame, and inserting each corner into the frames four corners, then work around the frame alternating opposite sides until complete. **Loop** for removing Graphic (11) will be at bottom corner.



Step 6

The Back Panel with Lights (8) installs on the flat side of the frame. Back Panel has a gasket edge just like the printed Graphic (11) and installs in the same manner. Lights will face inward when installed.

Insert stitched side of the gasket first



To remove the graphic, pull the loop found on the corner.
To remove the Back Panel, pull the white tab at the bottom.

Step 7

Attach male end of Power Cord Adapter (9) to male connection located at bottom of the Back Panel with Lights (8). Plug female end of Power Cord (10) into Power Cord Adapter (9). Plug Power Cord (10) into power source.

Storage & Care

Store in a cool, dry place. To clean hardware, wipe with a damp cloth. Do NOT dry clean graphic, can Steam Clean wrinkles.